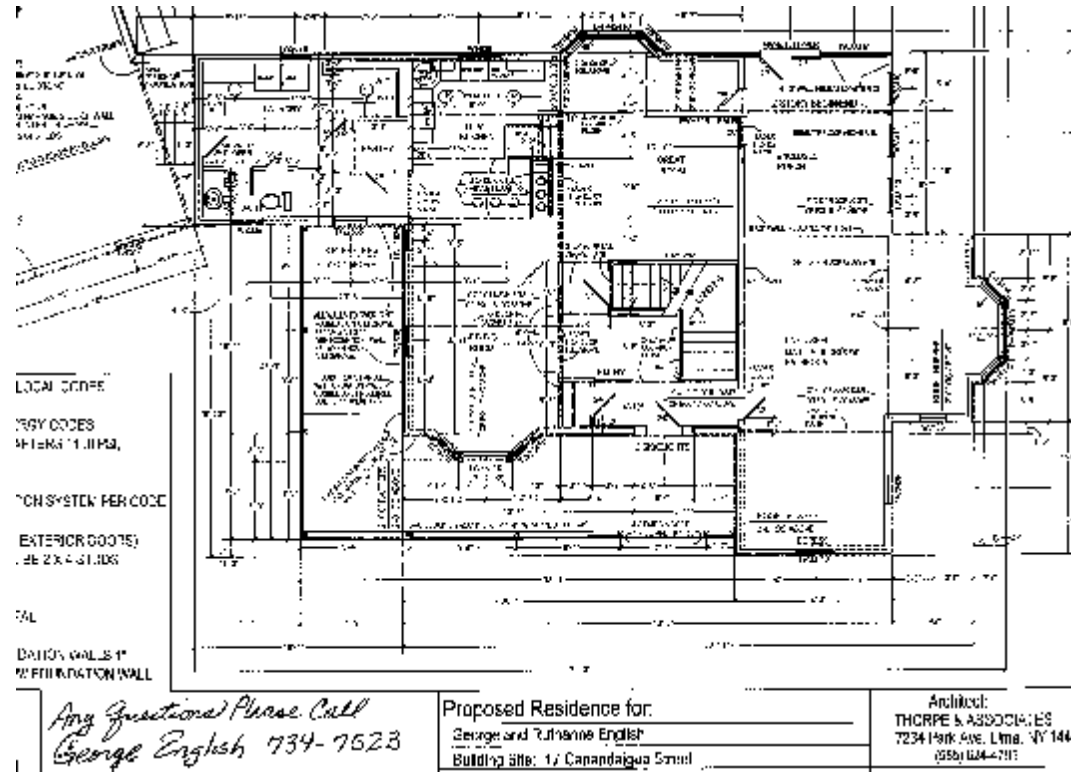


SCAN



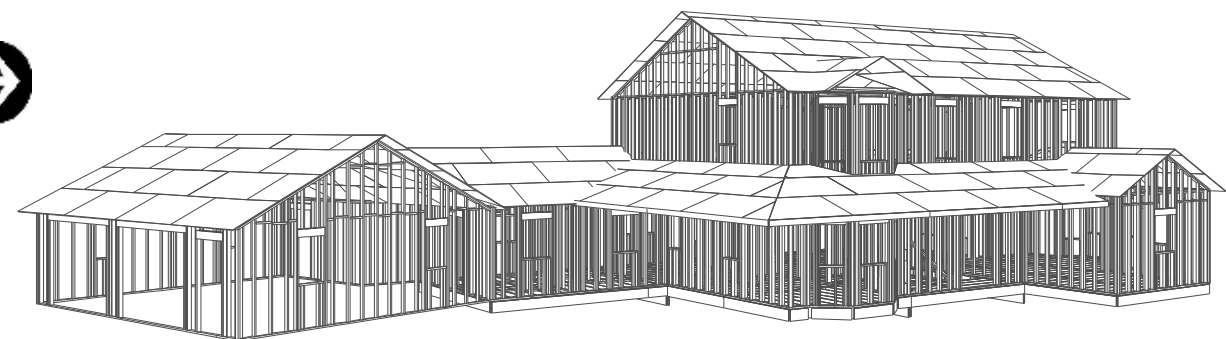
ITEM	DESCRIPTION	QTY	UNIT	PRICE	TOTAL
08004	3/4" S&G PLY	4800	SF	0.00	0.00
08005	#2 SYP	240	LF	0.00	0.00
08006	#2 SYP	240	LF	0.00	0.00
08007	#2 SYP	240	LF	0.00	0.00
08008	#2 SYP	240	LF	0.00	0.00
08009	#2 SYP	240	LF	0.00	0.00
08010	#2 SYP	240	LF	0.00	0.00
08011	#2 SYP	240	LF	0.00	0.00
08012	#2 SYP	240	LF	0.00	0.00
08013	#2 SYP	240	LF	0.00	0.00
08014	#2 SYP	240	LF	0.00	0.00
08015	#2 SYP	240	LF	0.00	0.00
08016	#2 SYP	240	LF	0.00	0.00
08017	#2 SYP	240	LF	0.00	0.00
08018	#2 SYP	240	LF	0.00	0.00
08019	#2 SYP	240	LF	0.00	0.00
08020	#2 SYP	240	LF	0.00	0.00
08021	#2 SYP	240	LF	0.00	0.00
08022	#2 SYP	240	LF	0.00	0.00
08023	#2 SYP	240	LF	0.00	0.00
08024	#2 SYP	240	LF	0.00	0.00
08025	#2 SYP	240	LF	0.00	0.00
08026	#2 SYP	240	LF	0.00	0.00
08027	#2 SYP	240	LF	0.00	0.00
08028	#2 SYP	240	LF	0.00	0.00
08029	#2 SYP	240	LF	0.00	0.00
08030	#2 SYP	240	LF	0.00	0.00
08031	#2 SYP	240	LF	0.00	0.00
08032	#2 SYP	240	LF	0.00	0.00
08033	#2 SYP	240	LF	0.00	0.00
08034	#2 SYP	240	LF	0.00	0.00
08035	#2 SYP	240	LF	0.00	0.00
08036	#2 SYP	240	LF	0.00	0.00
08037	#2 SYP	240	LF	0.00	0.00
08038	#2 SYP	240	LF	0.00	0.00
08039	#2 SYP	240	LF	0.00	0.00
08040	#2 SYP	240	LF	0.00	0.00
08041	#2 SYP	240	LF	0.00	0.00
08042	#2 SYP	240	LF	0.00	0.00
08043	#2 SYP	240	LF	0.00	0.00
08044	#2 SYP	240	LF	0.00	0.00
08045	#2 SYP	240	LF	0.00	0.00
08046	#2 SYP	240	LF	0.00	0.00
08047	#2 SYP	240	LF	0.00	0.00
08048	#2 SYP	240	LF	0.00	0.00
08049	#2 SYP	240	LF	0.00	0.00
08050	#2 SYP	240	LF	0.00	0.00
08051	#2 SYP	240	LF	0.00	0.00
08052	#2 SYP	240	LF	0.00	0.00
08053	#2 SYP	240	LF	0.00	0.00
08054	#2 SYP	240	LF	0.00	0.00
08055	#2 SYP	240	LF	0.00	0.00
08056	#2 SYP	240	LF	0.00	0.00
08057	#2 SYP	240	LF	0.00	0.00
08058	#2 SYP	240	LF	0.00	0.00
08059	#2 SYP	240	LF	0.00	0.00
08060	#2 SYP	240	LF	0.00	0.00
08061	#2 SYP	240	LF	0.00	0.00
08062	#2 SYP	240	LF	0.00	0.00
08063	#2 SYP	240	LF	0.00	0.00
08064	#2 SYP	240	LF	0.00	0.00
08065	#2 SYP	240	LF	0.00	0.00
08066	#2 SYP	240	LF	0.00	0.00
08067	#2 SYP	240	LF	0.00	0.00
08068	#2 SYP	240	LF	0.00	0.00
08069	#2 SYP	240	LF	0.00	0.00
08070	#2 SYP	240	LF	0.00	0.00
08071	#2 SYP	240	LF	0.00	0.00
08072	#2 SYP	240	LF	0.00	0.00
08073	#2 SYP	240	LF	0.00	0.00
08074	#2 SYP	240	LF	0.00	0.00
08075	#2 SYP	240	LF	0.00	0.00
08076	#2 SYP	240	LF	0.00	0.00
08077	#2 SYP	240	LF	0.00	0.00
08078	#2 SYP	240	LF	0.00	0.00
08079	#2 SYP	240	LF	0.00	0.00
08080	#2 SYP	240	LF	0.00	0.00
08081	#2 SYP	240	LF	0.00	0.00
08082	#2 SYP	240	LF	0.00	0.00
08083	#2 SYP	240	LF	0.00	0.00
08084	#2 SYP	240	LF	0.00	0.00
08085	#2 SYP	240	LF	0.00	0.00
08086	#2 SYP	240	LF	0.00	0.00
08087	#2 SYP	240	LF	0.00	0.00
08088	#2 SYP	240	LF	0.00	0.00
08089	#2 SYP	240	LF	0.00	0.00
08090	#2 SYP	240	LF	0.00	0.00
08091	#2 SYP	240	LF	0.00	0.00
08092	#2 SYP	240	LF	0.00	0.00
08093	#2 SYP	240	LF	0.00	0.00
08094	#2 SYP	240	LF	0.00	0.00
08095	#2 SYP	240	LF	0.00	0.00
08096	#2 SYP	240	LF	0.00	0.00
08097	#2 SYP	240	LF	0.00	0.00
08098	#2 SYP	240	LF	0.00	0.00
08099	#2 SYP	240	LF	0.00	0.00
08100	#2 SYP	240	LF	0.00	0.00

OWN INTELLIFRAMER TODAY STARTING AT ONLY \$2995 WITH NO LEASE NEEDED
www.INTELLIFRAMER.com

PRICE

QUANTIFIED MATERIAL TAKEOFFS

TRACE



FRAME



"BuildersCAD new function to scan and trace has allowed us to quickly takeoff any project that comes to us. It's unique ability to quickly quantify an entire building is unmatched. Items that may have been overlooked are now automatically added with the proper setup and use of the Material Templates. We are using the automatically created 3D framed model to check our bids and to help sell our product. Many thanks to Rich who keeps us well trained in the software use which, in turn, helps to keep us one step ahead of the competition. I have been an active BuildersCAD user for over six years and look forward to many more productive years."
 Heath Folen - Design and Construction Manager - Alta Construction



"Although we are quite new using the BuildersCAD and Intelliframer software products, we are already seeing great results in both our Design and Production departments. The automated link between BuildersCAD and our Mango equipment is working great as well. We are very confident in our choice of BuildersCAD to automate our company and look forward to a long and productive future together. Please feel free to use me and our company anytime as a reference for your software products and training services."
 Holly Kelton - Connor Building Company - Designers and Builders of Colonial Reproductions and New England Classics

FOR COMPLETE INFORMATION CONTACT RICH RUSS @ BENCHMARK CAD 585-396-1548