

**STACK 1**

Row	Panel	Length	Width	Height
1	X16	1'-2"	5 1/2"	7'-11 5/8"
1	X15	1'-2"	5 1/2"	7'-11 5/8"
2	X01	12'-0"	3 1/2"	7'-11 5/8"
3	X02	5'-0 1/2"	3 1/2"	7'-11 5/8"
3	X05	7'-11"	3 1/2"	7'-11 5/8"
4	X03	10'-8"	3 1/2"	7'-11 5/8"
5	X04	12'-0"	3 1/2"	7'-11 5/8"
6	X06	11'-8 1/2"	3 1/2"	7'-11 5/8"
7	X07	8'-1 1/2"	3 1/2"	7'-11 5/8"
8	X08	12'-0"	3 1/2"	7'-11 5/8"
9	X09	10'-4"	3 1/2"	7'-11 5/8"
10	X10	12'-0"	3 1/2"	7'-11 5/8"
11	X14	6'-10"	3 1/2"	7'-11 5/8"
11	X13	5'-4"	3 1/2"	7'-11 5/8"
12	X11	11'-7 1/2"	3 1/2"	7'-11 5/8"
13	X12	12'-0"	3 1/2"	7'-11 5/8"

**STACK 2**

Row	Panel	Length	Width	Height
1	117	2'-8 1/2"	3 1/2"	7'-11 5/8"
1	116	5'-2"	3 1/2"	7'-11 5/8"
2	100	12'-0"	3 1/2"	7'-11 5/8"
3	101	12'-0"	3 1/2"	7'-11 5/8"
4	102	12'-0"	3 1/2"	7'-11 5/8"
5	103	1'-2 1/4"	3 1/2"	7'-11 5/8"
5	105	6'-0"	3 1/2"	7'-11 5/8"
5	113	1'-8 1/2"	3 1/2"	7'-11 5/8"
6	104	12'-0"	3 1/2"	7'-11 5/8"
7	106	6'-4 1/4"	3 1/2"	7'-11 5/8"
7	107	6'-0 3/4"	3 1/2"	7'-11 5/8"
8	108	8'-4 1/2"	3 1/2"	7'-11 5/8"
8	112	1'-8 1/2"	3 1/2"	7'-11 5/8"
9	109	9'-7 1/2"	5 1/2"	7'-11 5/8"
10	110	11'-10 1/2"	3 1/2"	7'-11 5/8"
11	111	11'-10 1/2"	3 1/2"	7'-11 5/8"
12	114	5'-4 3/4"	3 1/2"	7'-11 5/8"
12	115	3'-9 3/4"	3 1/2"	7'-11 5/8"
13	118	11'-4"	3 1/2"	7'-11 5/8"

### AUTOMATIC PULL LISTS

**PULL LIST - WALLS LEVEL A**

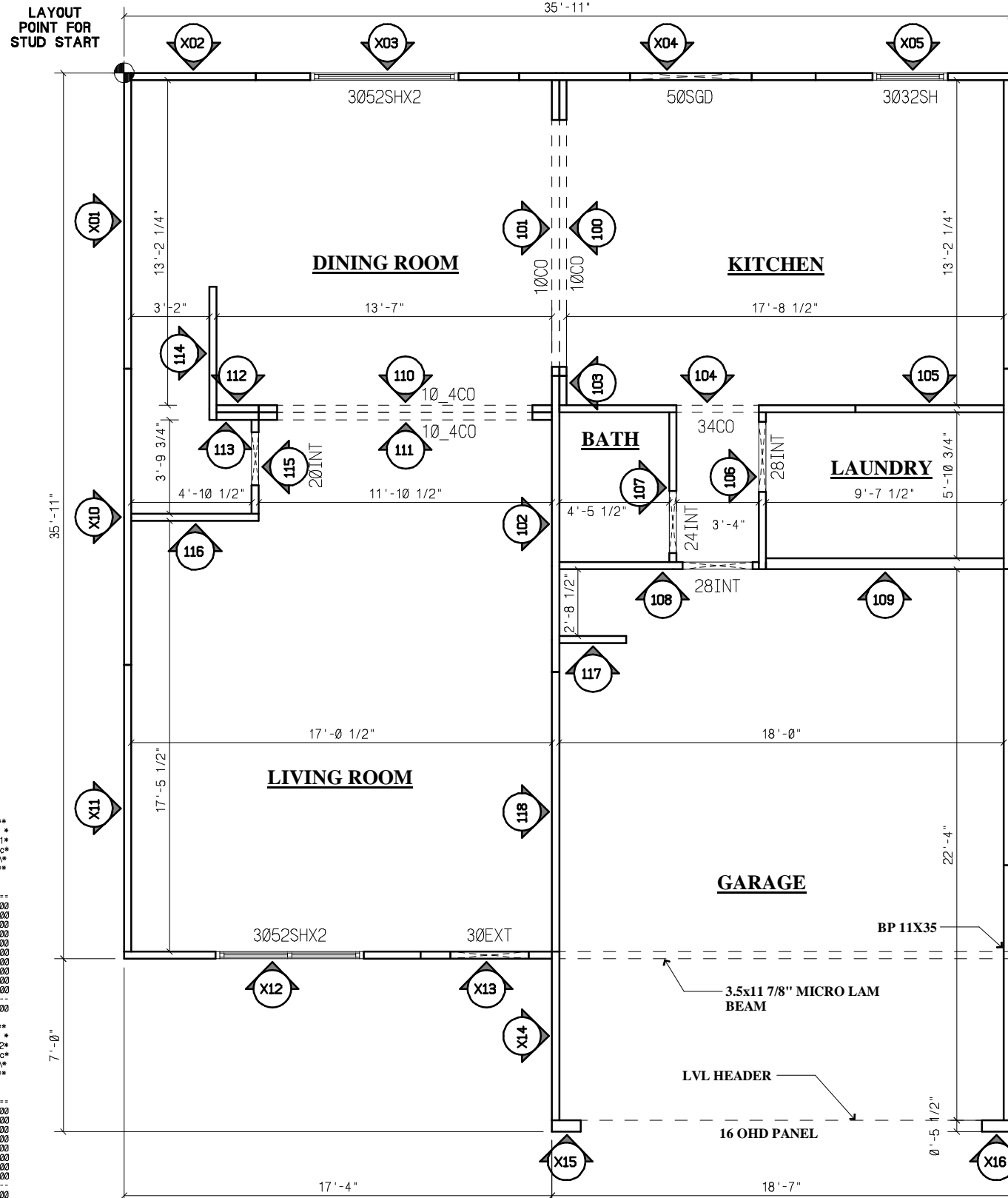
\* RUN: 10/07/2005 PAGE: 1\*  
 \* REVISED: 00/00/0000 JOB: BCMC\*  
 \* RUN: 18-40-56 USER: c:\bcad83\richard\

PART#	DESCR	SIZE	QTY/USED	QTY/COST	COST/UNIT	COST
065002	#2 SYP	2x12 14'	12/EA	0.3/MBF	0.00/MBF	0.00
065181	PLYWOOD	01/2x48 8'	3/SHE	2.0/SHE	0.00/SHE	0.00
060200	SHEATHING	01/2x48 8'	35/SHE	1.1/SHE	0.00/SHE	0.00
065203	SFF	2x4 12'	33/EA	0.3/MBF	0.00/MBF	0.00
065208	SFF	2x6 12'	1/EA	0.0/MBF	0.00/MBF	0.00
065228	SFF STUD	2x4 7'	48/EA	0.30/EA	0.00/EA	0.00
065229	SFF STUD	2x4 7' 8-5/8"	217/EA	1.2/MBF	0.00/MBF	0.00
065236	SFF STUD	2x6 7' 8-5/8"	17/EA	0.1/MBF	0.00/MBF	0.00
065263	TREATED	2x4 12'	23/EA	0.2/MBF	0.00/MBF	0.00
065268	TREATED	2x6 12'	1/EA	0.0/MBF	0.00/MBF	0.00

**PULL LIST - WALLS LEVEL B**

\* RUN: 10/07/2005 PAGE: 2\*  
 \* REVISED: 00/00/0000 JOB: BCMC\*  
 \* RUN: 18-40-56 USER: c:\bcad83\richard\

PART#	DESCR	SIZE	QTY/USED	QTY/COST	COST/UNIT	COST
065002	#2 SYP	2x12 14'	4/EA	0.1/MBF	0.00/MBF	0.00
065181	PLYWOOD	01/2x48 8'	1/SHE	1.0/SHE	0.00/SHE	0.00
060200	SHEATHING	01/2x48 8'	37/SHE	1.2/SHE	0.00/SHE	0.00
065203	SFF	2x4 12'	62/EA	0.5/MBF	0.00/MBF	0.00
065208	SFF	2x6 12'	3/EA	0.0/MBF	0.00/MBF	0.00
065228	SFF STUD	2x4 7'	34/EA	0.30/EA	0.00/EA	0.00
065229	SFF STUD	2x4 7' 8-5/8"	244/EA	1.3/MBF	0.00/MBF	0.00
065236	SFF STUD	2x6 7' 8-5/8"	12/EA	0.1/MBF	0.00/MBF	0.00

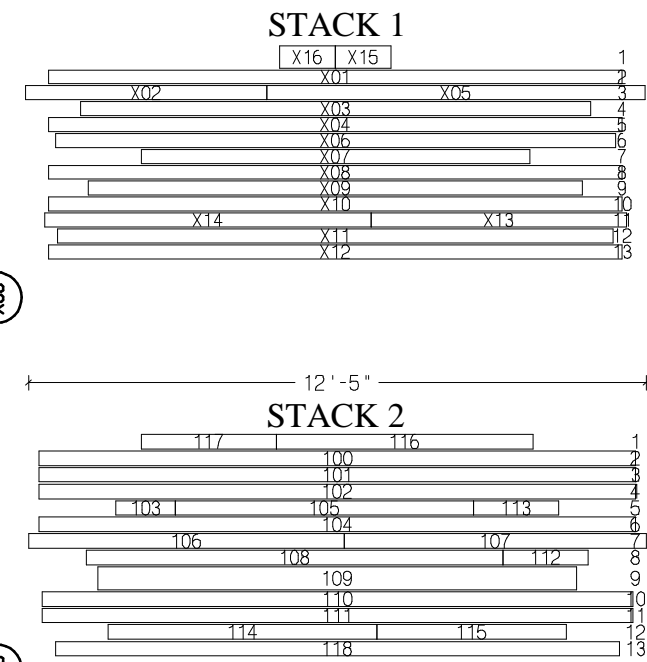


**PANEL LENGTHS LIST**

Level: 1

Panel	Length	Width	I/E	Panel	Length	Width	I/E
100	12'	3-1/2"	IB	118	11' 4"	3-1/2"	IB
101	12'	3-1/2"	IB	X01	12'	3-1/2"	IB
102	12'	3-1/2"	IB	X02	5' 0-1/2"	3-1/2"	IB
103	1' 2-1/4"	3-1/2"	IB	X03	10' 8"	3-1/2"	IB
104	12'	3-1/2"	IB	X04	12'	3-1/2"	IB
105	6'	3-1/2"	IB	X05	7' 11"	3-1/2"	IB
106	6' 4-1/4"	3-1/2"	I	X06	11' 8-1/2"	3-1/2"	IB
107	6' 0-3/4"	3-1/2"	I	X07	8' 1-1/2"	3-1/2"	IB
108	8' 4-1/2"	3-1/2"	IB	X08	12'	3-1/2"	IB
109	9' 7-1/2"	5-1/2"	IB	X09	10' 4"	3-1/2"	IB
110	11' 10-1/2"	3-1/2"	IB	X10	12'	3-1/2"	IB
111	11' 10-1/2"	3-1/2"	IB	X11	11' 7-1/2"	3-1/2"	IB
112	1' 8-1/2"	3-1/2"	IB	X12	12'	3-1/2"	IB
113	1' 8-1/2"	3-1/2"	IB	X13	5' 4"	3-1/2"	IB
114	5' 4-3/4"	3-1/2"	I	X14	6' 10"	3-1/2"	IB
115	3' 9-3/4"	3-1/2"	I	X15	1' 2"	5-1/2"	IB
116	5' 2"	3-1/2"	I	X16	1' 2"	5-1/2"	IB
117	2' 8-1/2"	3-1/2"	I				

# STACKER +



### AUTOMATIC OPENING SCHEDULES

NAME	TYPE	QTY	SWING	HAND	WIDTH	HEIGHT	HEADER HEIGHT	DESCRIPTION	LEVEL A
30EXT	EXTERIOR DOOR	1	outswing	right	3'-2"	6'-10 7/8"	6'-10 7/8"	3068 Exterior Door	
50SGD	EXTERIOR DOOR	1	outswing	left	4'-11 1/4"	6'-10 7/8"	6'-10 7/8"	5-0 SLIDING PATIO	
10CO	INTERIOR DOOR	2	outswing	right	10'-0"	6'-10 7/8"	6'-10 7/8"	Cased Opening	
10_4CO	INTERIOR DOOR	2	outswing	right	10'-4"	6'-10 7/8"	6'-10 7/8"	Cased Opening	
20INT	INTERIOR DOOR	1	outswing	left	2'-2"	6'-10 7/8"	6'-10 7/8"	Interior Door	
24INT	INTERIOR DOOR	1	outswing	left	2'-6"	6'-10 7/8"	6'-10 7/8"	Interior Door	
28INT	INTERIOR DOOR	1	inswing	left	2'-10"	6'-10 7/8"	6'-10 7/8"	Interior Door	
28INT	INTERIOR DOOR	1	inswing	right	2'-10"	6'-10 7/8"	6'-10 7/8"	Interior Door	
34CO	INTERIOR DOOR	1	inswing	right	3'-4"	6'-10 7/8"	6'-10 7/8"	Cased Opening	
3032SH	WINDOW	1	-	-	3'-0 1/2"	3'-2 1/2"	6'-10 7/8"	SINGLE HUNG	
3052SHX2	WINDOW	2	-	-	6'-8"	5'-2 1/2"	6'-10 7/8"	SINGLE HUNG TWIN	

INCLUDES STYLIZED PANEL SYMBOLS AND PANEL BREAK GRIDS INCLUDED IN BENCHMARK CAD'S PANEL PRODUCTIVITY PLUG-IN.

ALL 1ST LEVEL WALLS 7'-11 5/8" A.F.F.

**1ST LEVEL WALL PANELS**  
THE Woodlands  
Lot#423

Roof & Floor Framing  
Wall Panels, I-Joists  
Engineered Products  
Framed 3D Models

**BUILDERS CAD 8.3**  
SALES - EXPERT SUPPORT - TRAINING  
ON-SITE IMPLEMENTATION  
PANEL PLAN AND DESIGN SERVICES

**BENCHMARK CAD**  
INTELLIFRAMER  
Canandaigua, NY  
585-396-1548



SHEET

**P-1**