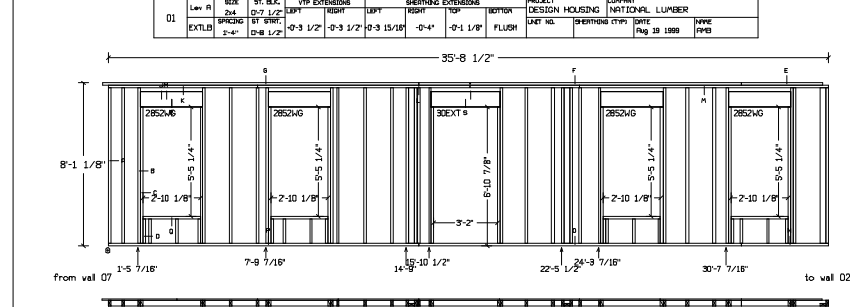
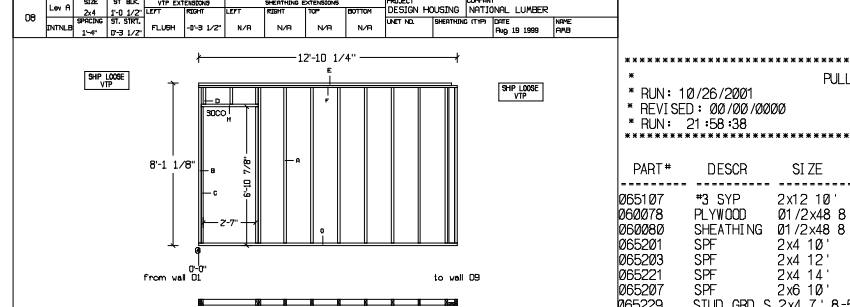


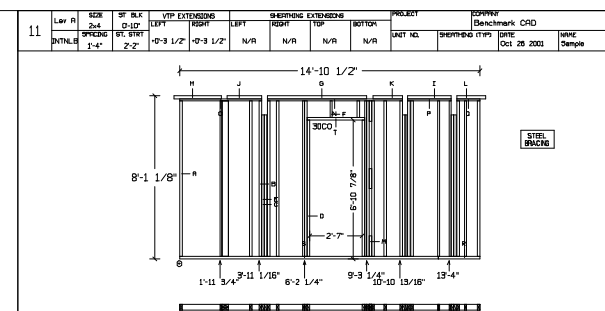
DESCRIPTION	QTY	SIZE	LENGTH	DESCRIPTION	QTY	SIZE	LENGTH
A-STUD	16	2x4	7-8 5/8"	L-TOP PLT	1	2x4	6-8 1/2"
B-JOCK STUD	8	2x4	7-8 5/8"	M-TOP PLT	1	2x4	16-0"
C-JOCK	12	2x4	6-9 3/8"	N-TOP PLT	1	2x4	15-0"
D-CRIPPLE	6	2x4	1-2 5/8"	O-BOTTOM PLATE	1	2x4	9-0"
E-CRIPPLE	8	2x4	3-6 7/8"	P-BOTTOM PLATE	1	2x4	16-0"
F-VTP	1	2x4	4-8 1/2"	Q-BOTTOM PLATE	1	2x4	14-8 1/2"
G-VTP	1	2x4	18-0"	R-SILL	1	2x4	5-11 3/4"
H-VTP	1	2x4	15-0"	S-SILL	2	2x4	3-0"
I-HEADER SHM	1	1/2x10	6-5 3/4"	T-SOLID HEADER	2	2x10	6-5 3/4"
J-HEADER SHM	1	1/2x10	6-0"	U-SOLID HEADER	2	2x10	6-0"
K-HEADER SHM	2	1/2x10	9-3"	V-SOLID HEADER	4	2x10	9-3"



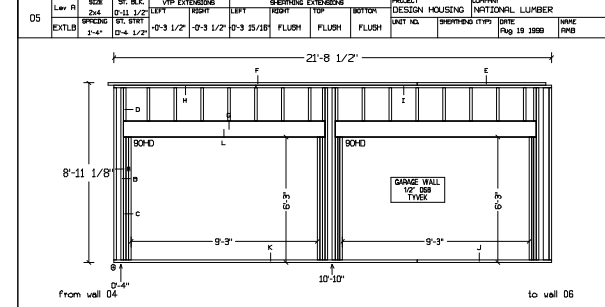
DESCRIPTION	QTY	SIZE	LENGTH	DESCRIPTION	QTY	SIZE	LENGTH
A-STUD	22	2x4	7-8 5/8"	K-TOP PLT	1	2x4	7-4 1/2"
B-JOCK STUD	10	2x4	7-8 5/8"	L-TOP PLT	1	2x4	16-0"
C-JOCK	10	2x4	6-9 3/8"	M-TOP PLT	1	2x4	12-4"
D-CRIPPLE	16	2x4	1-2 5/8"	N-BOTTOM PLATE	1	2x4	4-4"
E-VTP	1	2x4	4-0 1/2"	O-BOTTOM PLATE	1	2x4	16-0"
F-VTP	1	2x4	18-0"	P-BOTTOM PLATE	1	2x4	15-4 1/2"
G-VTP	1	2x4	15-0"	Q-SILL	4	2x4	2-10 1/8"
H-HEADER SHM	2	1/2x10	9-1 1/8"	R-SOLID HEADER	4	2x10	9-1 1/8"
I-HEADER SHM	1	1/2x10	9-5"	S-SOLID HEADER	2	2x10	9-5"
J-HEADER SHM	2	1/2x10	9-1 1/8"	T-SOLID HEADER	4	2x10	9-1 1/8"



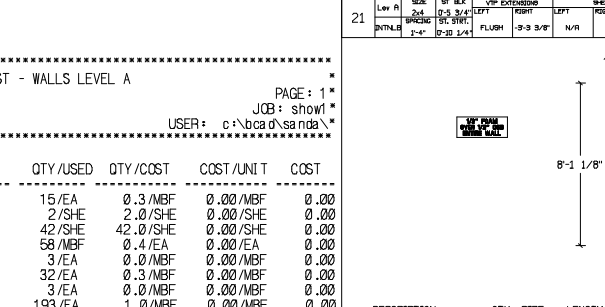
DESCRIPTION	QTY	SIZE	LENGTH	DESCRIPTION	QTY	SIZE	LENGTH
A-STUD	9	2x4	7-8 5/8"	F-VTP	1	2x4	12-6 3/4"
B-JOCK STUD	2	2x4	7-8 5/8"	G-TOP PLT	1	2x4	12-10 1/4"
C-JOCK	2	2x4	6-9 3/8"	H-BOTTOM PLATE	1	2x4	12-10 1/4"
D-CRIPPLE	3	2x4	0-9 3/4"	I-NON-BEARING HEADER	1	2x4	2-10"



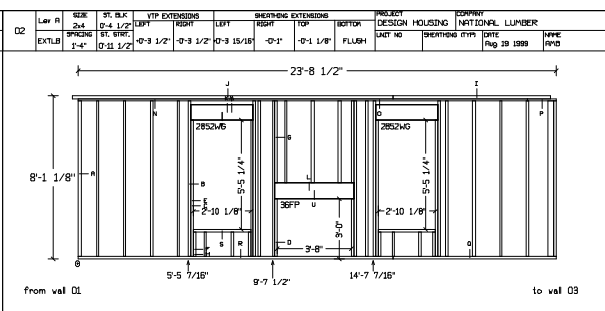
DESCRIPTION	QTY	SIZE	LENGTH	DESCRIPTION	QTY	SIZE	LENGTH
A-STUD	14	2x4	7-8 5/8"	K-VERY TOP PLATE	1	2x4	1-5 9/16"
B-JOCK STUD	8	2x4	7-8 5/8"	L-VERY TOP PLATE	1	2x4	1-5 1/4"
C-JOCK	2	2x4	7-8 5/8"	M-VERTICAL BLOCK	3	2x4	1-0"
D-JOCK	2	2x4	6-9 3/8"	N-TOP PLATE	1	2x4	6-8 1/2"
E-JOCK	4	2x4	7-0 3/8"	O-TOP PLATE	1	2x4	4-0 9/16"
F-CRIPPLE	2	2x4	0-9 3/4"	P-TOP PLATE	1	2x4	2-1 15/16"
G-VERY TOP PLATE	1	2x4	4-11 7/16"	Q-TOP PLATE	1	2x4	1-1 3/4"
H-VERY TOP PLATE	1	2x4	2-4"	R-BOTTOM PLATE	1	2x4	2-0 1/2"
I-VERY TOP PLATE	1	2x4	1-1 15/16"	S-BOTTOM PLATE	1	2x4	12-10"
J-VERY TOP PLATE	1	2x4	1-8 9/16"	T-NON-BEARING HEADER	1	2x4	2-10"



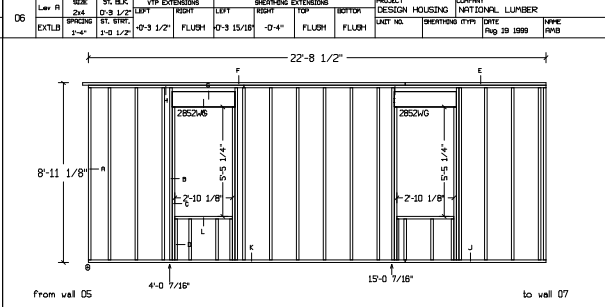
DESCRIPTION	QTY	SIZE	LENGTH	DESCRIPTION	QTY	SIZE	LENGTH
A-STUD	3	2x4	8-6 5/8"	G-HEADER SHM	2	1/2x10	10-0"
B-JOCK STUD	4	2x4	8-6 5/8"	H-TOP PLT	1	2x4	7-0 1/2"
C-JOCK	12	2x4	6-1 1/2"	I-TOP PLT	1	2x4	14-8"
D-CRIPPLE	18	2x4	1-7 7/8"	J-BOTTOM PLATE	1	2x4	6-8"
E-VTP	1	2x4	6-4 1/2"	K-BOTTOM PLATE	1	2x4	15-0 1/2"
F-VTP	1	2x4	15-4"	L-SOLID HEADER	4	2x10	10-0"



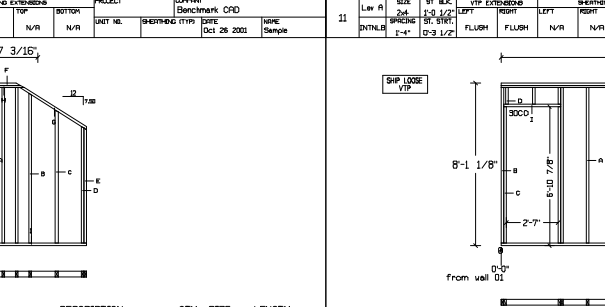
DESCRIPTION	QTY	SIZE	LENGTH	DESCRIPTION	QTY	SIZE	LENGTH
A-STUD	3	2x4	7-8 5/8"	F-VERY TOP PLATE	1	2x4	1-8 5/8"
B-STUD	1	2x4	7-5 5/8"	G-TOP PLATE	1	2x4	3-11"
C-STUD	1	2x4	6-7 5/8"	H-TOP PLATE	1	2x4	1-11"
D-STUD	1	2x4	5-8 5/8"	I-BOTTOM PLATE	1	2x4	5-0"
E-STUD	1	2x4	5-8 11/16"				



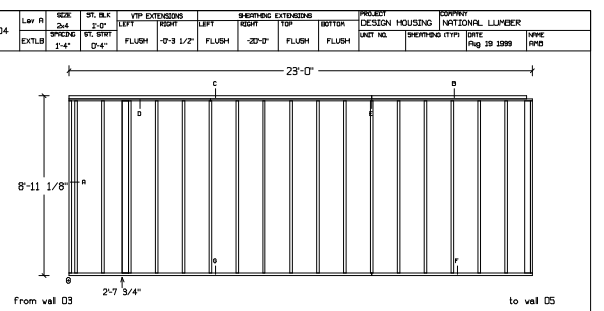
DESCRIPTION	QTY	SIZE	LENGTH	DESCRIPTION	QTY	SIZE	LENGTH
A-STUD	13	2x4	7-8 5/8"	L-HEADER SHM	1	1/2x10	9-11"
B-JOCK STUD	6	2x4	7-8 5/8"	M-HEADER SHM	1	1/2x10	9-1 1/8"
C-JOCK	2	2x4	6-9 3/8"	N-TOP PLT	1	2x4	7-7 1/2"
D-JOCK	2	2x4	2-10 1/2"	O-TOP PLT	1	2x4	14-8"
E-JOCK	2	2x4	6-9 3/8"	P-TOP PLT	1	2x4	1-5"
F-CRIPPLE	4	2x4	1-2 5/8"	Q-BOTTOM PLATE	1	2x4	9-1"
G-CRIPPLE	5	2x4	4-0 7/8"	R-BOTTOM PLATE	1	2x4	15-7 1/2"
H-CRIPPLE	4	2x4	1-2 5/8"	S-SILL	2	2x4	2-10 1/8"
I-VTP	1	2x4	7-9 1/2"	T-SOLID HEADER	2	2x10	9-1 1/8"
J-VTP	1	2x4	15-11"	U-SOLID HEADER	2	2x10	9-11"
K-HEADER SHM	1	1/2x10	9-1 1/8"	V-SOLID HEADER	2	2x10	9-1 1/8"



DESCRIPTION	QTY	SIZE	LENGTH	DESCRIPTION	QTY	SIZE	LENGTH
A-STUD	15	2x4	8-6 5/8"	H-TOP PLT	1	2x4	7-8 1/2"
B-JOCK STUD	4	2x4	8-6 5/8"	I-TOP PLT	1	2x4	15-0"
C-JOCK	4	2x4	7-7 3/8"	J-BOTTOM PLATE	1	2x4	7-0"
D-CRIPPLE	8	2x4	2-0 5/8"	K-BOTTOM PLATE	1	2x4	15-8 1/2"
E-VTP	1	2x4	7-0"	L-SILL	2	2x4	2-10 1/8"
F-VTP	1	2x4	18-0"	M-SOLID HEADER	4	2x10	9-1 1/8"
G-HEADER SHM	2	1/2x10	9-1 1/8"				



DESCRIPTION	QTY	SIZE	LENGTH	DESCRIPTION	QTY	SIZE	LENGTH
A-STUD	12	2x4	7-8 5/8"	F-VERTICAL BLOCK	3	2x4	1-0"
B-JOCK STUD	4	2x4	7-8 5/8"	G-TOP PLT	1	2x4	13-10 1/4"
C-JOCK	4	2x4	6-9 3/8"	H-BOTTOM PLATE	1	2x4	13-10 1/4"
D-CRIPPLE	5	2x4	0-9 3/4"	I-NON-BEARING HEADER	1	2x4	2-10"
E-VTP	1	2x4	13-10 1/4"	J-NON-BEARING HEADER	1	2x4	2-11 1/2"



DESCRIPTION	QTY	SIZE	LENGTH	DESCRIPTION	QTY	SIZE	LENGTH
A-STUD	22	2x4	8-6 5/8"	E-TOP PLT	1	2x4	16-0"
B-VTP	1	2x4	7-8 1/2"	F-BOTTOM PLATE	1	2x4	8-0"
C-VTP	1	2x4	15-0"	G-BOTTOM PLATE	1	2x4	15-0"
D-TOP PLT	1	2x4	7-0"				

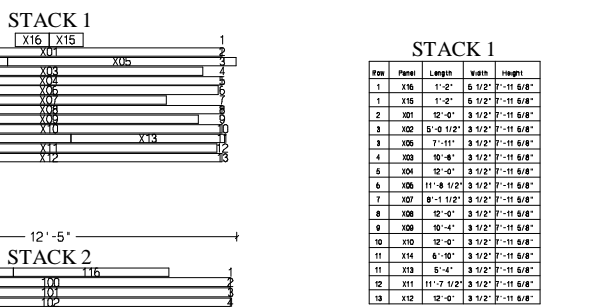
PANEL LENGTHS LIST

Level: 1

Panel	Length	Width	I/E	Panel	Length	Width	I/E
01	35' 8-1/2"	3-1/2"	EB	12	2' 4"	3-1/2"	I
02	23' 8-1/2"	3-1/2"	EB	13	3' 7-3/4"	3-1/2"	I
03	35' 8-1/2"	3-1/2"	EB	14	14' 10-1/2"	3-1/2"	I
04	23'	3-1/2"	EB	15	1' 11-1/4"	3-1/2"	I
05	21' 8-1/2"	3-1/2"	EB	16	5' 3-3/4"	3-1/2"	I
06	22' 8-1/2"	3-1/2"	EB	17	6' 4-1/2"	5-1/2"	I
07	2' 3-1/2"	3-1/2"	EB	18	5' 1-3/4"	3-1/2"	I
08	12' 10-1/4"	3-1/2"	I	19	21' 5"	3-1/2"	I
09	3' 6"	3-1/2"	I	20	3'	3-1/2"	I
10	5'	3-1/2"	I	21	6' 1"	3-1/2"	I
	11	13' 10-1/4"	3-1/2"	I			

OPENING SCHEDULE

TYPE	QTY	SWING	HAND	WIDTH	HEIGHT	HEADER HEIGHT	DESCRIPTION
2-2x12BM	3	outswing	right	0'-3 1/4"	0'-11 1/4"	0'-0"	Double 2x12 Beam
28EXT	1	outswing	right	2'-0"	6'-10 7/8"	6'-10 7/8"	2888 Exterior Door
30EXT	1	inswing	left	3'-2"	6'-10 7/8"	6'-10 7/8"	3088 Exterior Door
38FP	1	outswing	right	3'-8"	3'-0"	3'-0"	
60SGD	1	inswing	right	6'-0"	6'-10 7/8"	6'-10 7/8"	Sliding Glass Door
90HD	2	inswing	right	6'-3"	6'-3"	6'-3"	
2898	3	outswing	left	2'-8 1/2"	6'-10 7/8"	6'-10 7/8"	
30C0	3	outswing	right	2'-7"	6'-10 7/8"	6'-10 7/8"	CASED OPENING
40FP	2	outswing	right	4'-4"	6'-10 7/8"	6'-10 7/8"	Dbl Bl-Fold
1630X2	2	-	-	3'-0"	3'-1"	6'-10 7/8"	
2852DH2	1	-	-	5'-11 3/4"	5'-5 1/4"	6'-10 7/8"	Dbl Hung - Tw'h
2852WG	6	-	-	2'-10 1/8"	5'-5 1/4"	6'-10 7/8"	
2852WG	2	-	-	2'-10 1/8"	6'-6 1/4"	7'-8 7/8"	



STACK 1

Row	Panel	Length	Width	Height
1	116	1'-2"	5 1/2"	7'-11 5/8"
2	115	1'-2"	5 1/2"	7'-11 5/8"
3	102	12'-0"	3 1/2"	7'-11 5/8"
4	101	12'-0"	3 1/2"	7'-11 5/8"
5	100	8'-0 1/2"	3 1/2"	7'-11 5/8"
6	100	10'-4"	3 1/2"	7'-11 5/8"
7	100	10'-4"	3 1/2"	7'-11 5/8"
8	106	11'-8 1/2"	3 1/2"	7'-11 5/8"
9	106	12'-0"	3 1/2"	7'-11 5/8"
10	106	6'-4 1/4"	3 1/2"	7'-11 5/8"
11	107	8'-0 3/4"	3 1/2"	7'-11 5/8"
12	108	10'-4"	3 1/2"	7'-11 5/8"
13	114	8'-10"	3 1/2"	7'-11 5/8"
14	113	8'-4"	3 1/2"	7'-11 5/8"
15	111	11'-7 1/2"	3 1/2"	7'-11 5/8"
16	112	12'-0"	3 1/2"	7'-11 5/8"

STACK 2

Row	Panel	Length	Width	Height
1	117	2'-8 1/2"	3 1/2"	7'-11 5/8"
2	116	9'-2"	3 1/2"	7'-11 5/8"
3	100	12'-0"	3 1/2"	7'-11 5/8"
4	101	12'-0"	3 1/2"	7'-11 5/8"
5	102	12'-0"	3 1/2"	7'-11 5/8"
6	103	12'-0"	3 1/2"	7'-11 5/8"
7	104	12'-0"	3 1/2"	7'-11 5/8"
8	105	12'-0"	3 1/2"	7'-11 5/8"
9	106	11'-8 1/2"	3 1/2"	7'-11 5/8"
10	106	12'-0"	3 1/2"	7'-11 5/8"
11	106	6'-4 1/4"	3 1/2"	7'-11 5/8"
12	107	8'-0 3/4"	3 1/2"	7'-11 5/8"
13	108	10'-4"	3 1/2"	7'-11 5/8"
14	112	11'-8 1/2"	3 1/2"	7'-11 5/8"
15	110	11'-8 1/2"	3 1/2"	7'-11 5/8"
16	111	11'-8 1/2"	3 1/2"	7'-11 5/8"
17	114	8'-4 1/4"	3 1/2"	7'-11 5/8"
18	115	3'-9 3/4"	3 1/2"	7'-11 5/8"
19	118	11'-4"	3 1/2"	7'-11 5/8"

BENCHMARK
PANEL STACKER

Typical Wall Panel Drawings Created Automatically by the BuildersCAD Intelliframer Software

No CAD Drafting was required or used to create any of the Drawings shown on this page.



SAMPLE WALL PANEL OUTPUT FOR BCMC 2005
DRAWN USING BUILDERSCAD INTELLIFRAMER

