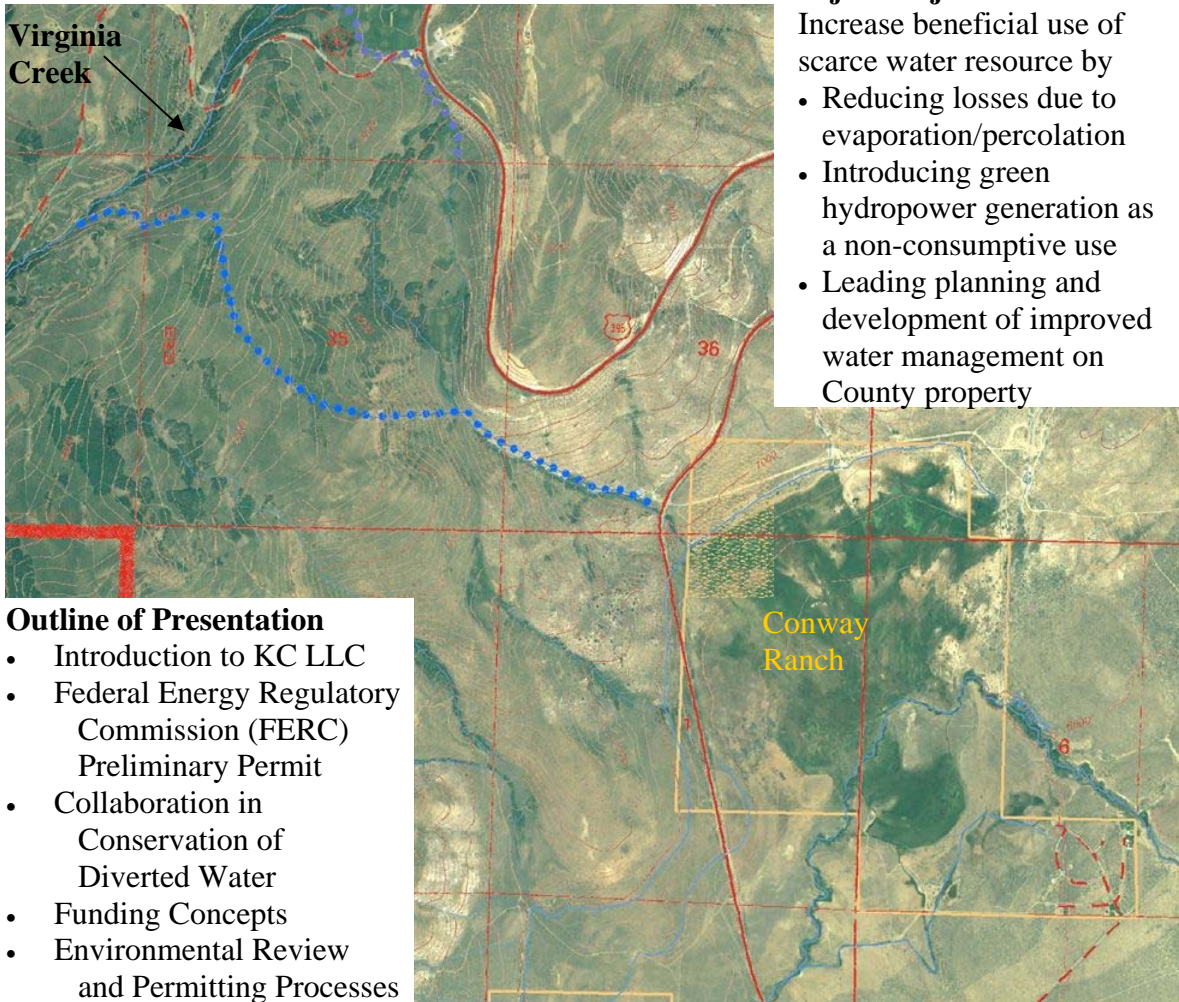


Mono County Board of Supervisors,
Community Meeting in Lee Vining, February 17, 2009

Advance Information regarding Presentation by  KC LLC

A Proposal for Improvements to Water Diversion from Virginia Creek for Conway Ranch



Project Objective

Increase beneficial use of scarce water resource by

- Reducing losses due to evaporation/percolation
- Introducing green hydropower generation as a non-consumptive use
- Leading planning and development of improved water management on County property

Outline of Presentation

- Introduction to KC LLC
- Federal Energy Regulatory Commission (FERC) Preliminary Permit
- Collaboration in Conservation of Diverted Water
- Funding Concepts
- Environmental Review and Permitting Processes

A Proposal

**Improvements to
Water Diversion from Virginia Creek
for Conway Ranch**

Mono County Board of Supervisors
Lee Vining

by  KCLLC

Outline of Presentation

- Introduction to KC LLC
- Federal Energy Regulatory Commission - FERC Preliminary Permit
- Collaboration in Conservation of Water
- Funding Concepts
- Environmental Review and Permitting Processes

 KCLLC

Introduction to KC LLC

- Small Hydropower Company
 - Davis Hydro : Operations
 - Sackheim Consulting: ... Regulatory
- Offices in Sacramento Area
- Initial Focus of Team: Kilarc Project
- Projects in
 - New England, Maryland, and California

 KCLLC

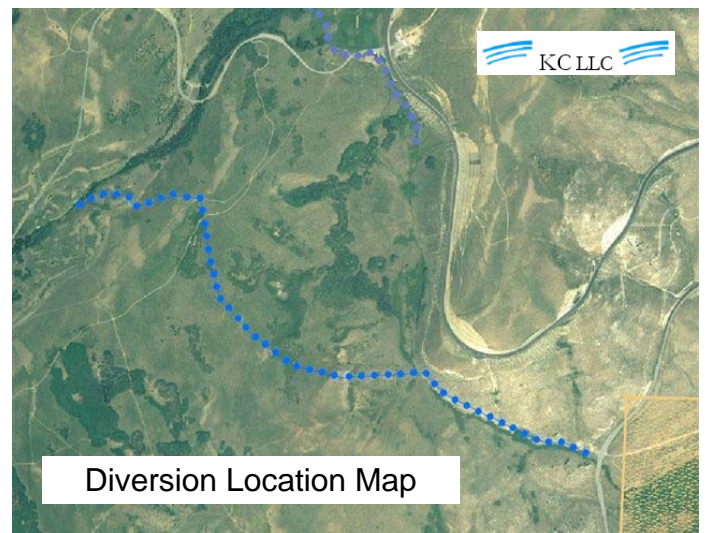
Project Location



FERC Permit to Study

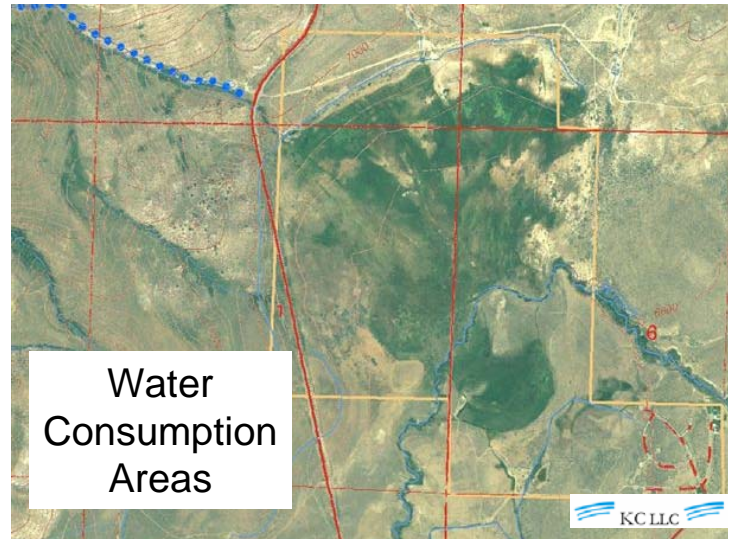
- 3 year FERC Permit - July 2008
- Investigations
- Consultation
- Feasibility
- Prepare a Development Application
- Confers no authority to construct
- Extensive input

 KCLLC



The Hydro

- 1,400 foot drop
- 6 Cubic Feet per Second (cfs)
- Small powerhouse near Rt. 395
- 500 kW 6 months a year
- 4 Million kWh
 - Enough for 500 homes' annual use
- Highly Regulated



Water Conservation

- More water to Conway Ranch
 - Piped in
 - Reduces evaporation and percolation
- Pipe buried underground
- Pipeline environmental concerns
- Permits – Highly Regulated



Project Funding

- Increase Conway Lease Revenues
 - From increased water
- NRCS funding ½ of pipe cost
- Other conservation funding needed
- Hydro provides on-going support
 - Operations and Management
 - Diversion and Ditch Tending
 - Assured Water Delivery and Placement



Environmental Process

- Upstream Diversion Effects
 - In-stream habitat
 - No effect downstream
- Pipe Effects
 - Reduces Water Percolation
 - Changes Riparian Habitat
 - Visual - Underground Pipe, Powerhouse
- Construction Impacts - Manageable
- Aesthetic Concerns – Real



www.kchydro.info

• Kelly Sackheim & Richard Ely

Kelly 916 962-2271 – Permitting

Dick 530 753-8864 – Engineering

Kelly@kchydro.info

